





April 2025

MAWSON LAKES SCHOOL OSHC

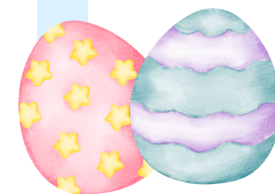
SUN	MON	TUES	WED	THURS	FRI	SAT
WEEK 10	SCHOOL INTERVIEWS	1 SCHOOL INTERVIEWS	2 SCHOOL INTERVIEWS	3 SCHOOL INTERVIEWS	4	5
6 WEEK 11	7	8	9	10	11	12 SPORTS DAY 
13 VAC CARE WEEK 1	14	15	16	17	18 EASTER FRIDAY 	19
20 VAC CARE WEEK 2	21 EASTER MONDAY 	22	23	24	25 ANZAC DAY 	26
27 WEEK 1	28 TERM 2 BEGINS	29	30			

SCHOOL VALUES

At Mawson Lakes School and OSHC, we have introduced three new values this year that truly reflect the spirit of our school and service. To help keep these values front of mind, we will soon be purchasing wisdom markers displaying these values, ensuring that children are continually reminded of them. Our values are: We are courageous, we are curious, and we are kind.

ACCOUNTS

Please make sure that your account is paid fortnightly and does not exceed \$250. Failure to do this will result in all care being cancelled until the account is paid.



FAMILY & PARENT CONTRIBUTION



We appreciate your feedback and look forward to hearing from you on how we can enhance and support your child's experience while they are in our care. If you have any preferences for experiences and activities, including community service, outdoor adventures, or artistic projects, please let us know. Please let us know about any unique occasions or cultural holidays that are significant to your family so that we can include them in our programming. Your input will help us organize our monthly programs so that your child has a meaningful experience.

CANCELLATION POLICY

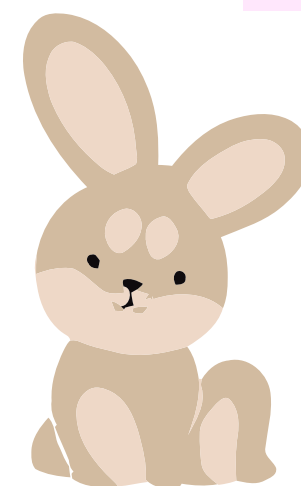
If you are wanting to cancel a booking, this must be made 1 week in advance for the account not to be charged. If you have any questions, please see Lorin or Sue. As of Term 2 a 'Not Notified Fee' of \$5 will take effect if you don't inform us of your child's absence.

REMINDERS

- Breakfast finishes at 8am
- We are a NUT FREE service
- July Vacation Care program will be out Friday of Week 4, Term 2
- Food Bank can drive will end Monday, Week 11

DUTY OF CARE

To ensure the safety of all children, please remember to sign your child in and out each day as this is part of your duty of care. This allows us to track attendance and ensure the safety of your child/ren.



Monthly Quote

BE THE REASON SOMEONE SMILES!

CONTACT US ON

0401 121 318

MAWSONLAKES.OSHC@SCHOOLS.SA.EDU.AU